

Year 6 Home Learning Tasks

You can use wither Class Dojo or email to contact the class teachers for support with Home Learning. (8.45-3.10 Mon-Fri)

Monday, Tuesday or Wednesday – cmorton@nanpean.cornwall.sch.uk

Thursday or Friday – smorrison@nanpean.cornwall.sch.uk

Below is a **suggested** daily timetable. If you already have a system that works for you and your family, continue what you are doing.

Follow the link on the school Facebook and website page to access your free parent Twinkl account. This will give you access to thousands of resources.



9am	9.30am	10am		11am	11.30am		1pm		More?
Yoga. Joe Wicks or Cosmic	Reading Comp: see below	English: see below	BRAIN BREAK	Maths: see below	Reading: see below	LUNCH BREAK	History: see below	FRESH AIR OR FREE CHOICE	Class Dojo Profile Uploads

READING

- Please find the time to read for at least 30 minutes per day. Don't forget to quiz!

<https://ukhosted47.renlearn.co.uk/2234793/default.aspx?fbclid=IwAR3SQLFnOLwmdcawK5MR9TGoCZ1qvocCeii3ImZouqksDHliEE99hy-sP6w>

If you need to read other books at home, find the quiz numbers on the following site:

<https://www.arbookfind.co.uk/default.aspx>

- Read the texts and comprehension online and write the answers in your Home Learning exercise book.

Week 1 Reading Comprehension: <https://EECEJYD.examprom.net>

Week 2 Reading Comprehension: <https://DUKEVAK.examprom.net>

testbase

ENGLISH

Complete 1 grammar test and one 3 writing activities a week if possible.

WRITING (Choose one of the suggestions):

- Pobble (Continue with Pobble if you are enjoying the routine of these tasks).
 - Logon to the following website. Each day the picture will be completely different! Scroll down and complete the following activities for the given picture: <http://www.pobble365.com/>
 - 'Question time', 'Sentence Challenge' and 'Sick sentences' Try to challenge yourself to use Exciting Sentences.

OR

- There are lots of short film clips on Literacy Shed <https://www.literacyshed.com/home.html>. Use one of these to inspire writing a story. We have done this in class for Chaperone Rouge and Alma. Try to use as many Exciting Sentences that you can and DADWAVERS.

GRAMMAR/SPELLING

- Complete the Grammar, Punctuation and Spelling Tests (GPS) on the following links. Write the answers in your books:

Week 1: <https://QEUYWYZ.examprom.net>

Week 2: <https://JIGOGIM.examprom.net>

- Practise your spellings.



See below for a **suggested timetable** for how to timetable these English activities over the next two weeks:

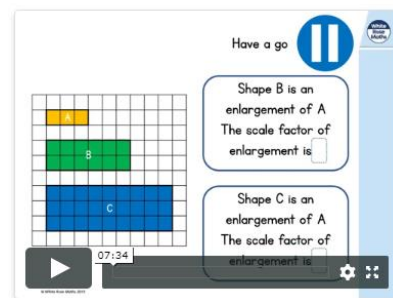
SUGGESTION	MONDAY	TUESDAY	WEDNESDAY	THURSDAY	FRIDAY
WEEK 1	Writing activity	Writing activity	GPS Test	Writing activity	Spelling Shed
WEEK 2	Writing activity	Writing activity	GPS Test	Spelling Shed	Bank Holiday

MATHS

For the next two weeks, we will continue to use the White Rose Home Learning activities. We will finish the ratio activities and move onto angles. Please note we have not included 'Lesson 3: Measure with a protractor' as we are aware that you may not have this equipment at home.

<https://whiterosemaths.com/homelearning/year-6/>

Lesson 1 - Calculating scale factors



1. Watch the introduction to the lesson
2. Download the activity beside the lesson. Complete the answers in your Home Learning exercise book.
3. Practise more arithmetic questions using the examples on the sheet that you have in your Home Learning book.
4. Practise your basic skills using your logins for the following websites:



See below for a **suggested timetable** for how to timetable these Maths activities over the next two weeks:

SUGGESTION	MONDAY	TUESDAY	WEDNESDAY	THURSDAY	FRIDAY
WEEK 1	Week 2 Lesson 1: Calculating scale factors	Maths Shed/Prodigy Maths Games	Week 2 Lesson 2: Ratio and proportion problems	Arithmetic	Week 2 Lesson 4: Introduce angles
WEEK 2	Week 2 Lesson 5: Calculate angles	Maths Shed/Prodigy Maths Games	Summer Term Week 1 Lesson 1: Vertically opposite angles	Summer Term Week 1 Lesson 2: Angles in a triangle	Bank Holiday

HISTORY

Our topic for this term will be based around World War II. For the next two weeks, we would like you to focus on the topic of Evacuation. Research the following questions:

1. What was evacuation?
2. When did evacuations start and end in Britain?
3. Why was evacuation introduced by the Government?
4. Who was evacuated?
5. Where were they evacuated to?
6. How many people were evacuated during the war?

Optional activities:

- Draw a picture of a suitcase and label the items that you think an evacuee would pack.
- Imagine you have been evacuated. Write a letter home to your family (see template on next page).
- Make your own gas mask, box and evacuee label (ideas on the next page).





Evacuee Letter



Imagine you are an evacuee from a city, who has just been billeted with a family in the countryside

Write a letter home to your parents describing your experience so far. Use the prompts and sentence starters to help you organise your writing.

Paragraph 1 – Introduction (explain why you are writing)

Dear...

I am writing to...

Well, I've arrived...

Paragraph 2 – The journey

The journey here was very unpleasant/rather exciting/a bit emotional...

Unfortunately/ Fortunately, the journey here...

Paragraph 3 – The billeting process (being placed with a family)

When we arrived...

The billeting officer...

Paragraph 4 – Your new home and family

After I was taken to my new home,...

My new family are...

Paragraph 5 – Emotions (how you are feeling/what you miss about home/what you are looking forward to/what you are worried about)

Sadly, I wish/miss...

Although it's not so bad here,...

Paragraph 6- Conclusion (sum up your experience and sign your letter)

Overall the evacuation went quite well/really badly...

On reflection I think...

Lots of love,

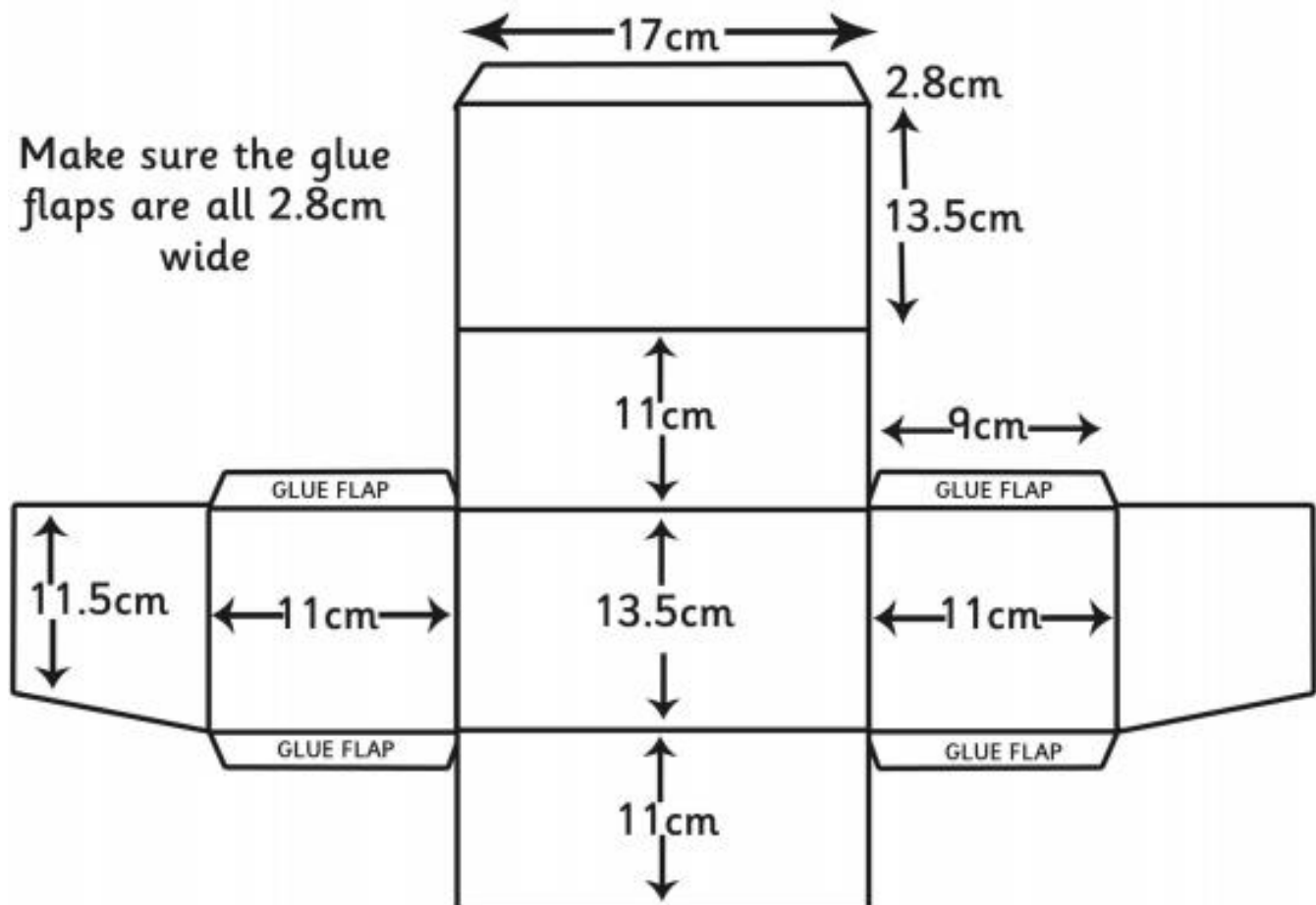
Yours affectionately,

Evacuee Labels

<u>Destination</u>	<u>Evacuation Service</u>
.....	City
Country.....	Name
Date	Address
	Date of Birth
	School Attended

Make Your Own Gas Mask Box

Using the measurements and the diagram below, along with a ruler, make your own gas mask box and then cut out the instruction label to stick on the back of it.



PACKING OF RESPIRATOR

The respirator should be in box with heavy end standing on bottom of the box.

The transparent eyepiece should lie evenly on top of the container and at full length without any deformation.

WHEN RESPIRATOR IS REQUIRED FOR USE

twinkl

1. Hold Respirator by the straps.
2. Put on by first putting chin into the facepiece and then draw the straps over the head.
3. Take off by pulling the straps over the head from the back.

DO NOT TAKE THE RESPIRATOR OFF BY PULLING THE CONTAINER UPWARDS OVER THE FACE.

